

COLLECTION OF SCIENTIFIC PAPERS WITH PROCEEDINGS OF THE

# VI INTERNATIONAL SCIENTIFIC AND PRACTICAL CONFERENCE

«Education and science of today: intersectoral  
issues and development of sciences»



**Cambridge**  
United Kingdom



**March 29**  
2024



**Cambridge Data Science LTD &  
NGO European Scientific Platform**



ISBN (online) 978-1-8380557-3-8  
ISBN (print) 978-617-8312-02-2

DOI 10.36074/logos-29.03.2024

59

Cambridge Data Science LTD | European Scientific Platform



COLLECTION OF SCIENTIFIC PAPERS

WITH PROCEEDINGS OF THE  
VI INTERNATIONAL SCIENTIFIC AND PRACTICAL CONFERENCE

**«EDUCATION AND SCIENCE OF  
TODAY: INTERSECTORAL ISSUES  
AND DEVELOPMENT OF SCIENCES»**



Cambridge,  
United Kingdom



March 29,  
2024



United Kingdom  
«P.C. Publishing House»

Ukraine  
«UKRLOGOS Group»

**2024**

UDC 082:001  
E 25



Chairman of the Organizing Committee: Goldenblat M.<sup>1</sup>  
Deputy Chairman of the Organizing Committee: Gambelton B.<sup>2</sup>

**The organization on behalf of which the book is published:**

<sup>1</sup> NGO European Scientific Platform, Ukraine

<sup>2</sup> Cambridge Data Science LTD, United Kingdom

Responsible for the layout: Bilous T.      Responsible designer: Bondarenko I.

**Recommended for publication by the Academic Council of the Institute of Scientific and Technical Integration and Cooperation. Protocol N° 29 from March 28<sup>th</sup>, 2024.**

---

E 25      **Education and science of today: intersectoral issues and development of sciences:** Collection of scientific papers «ΛΟΓΟΣ» with Proceedings of the VI International Scientific and Practical Conference, Cambridge, March 29, 2024. Cambridge-Vinnytsia: P.C. Publishing House & UKRLOGOS Group LLC, 2024.

ISBN 978-617-8312-02-2

«UKRLOGOS Group» LLC, Ukraine

ISBN 978-1-8380557-3-8 (PDF)

«P.C. Publishing House», United Kingdom

DOI 10.36074/logos-29.03.2024

Papers of participants of the VI International Scientific and Practical Conference «Education and science of today: intersectoral issues and development of sciences», held in Cambridge, March 29, 2024, are presented in the collection of scientific papers.



The conference is certified by Euro Science Certification Group  
(**Certificate N° 22513 dated January 7, 2024**);

The conference is also included in the catalog of International Scientific Conferences by ResearchBib; and registered by State Scientific Institution «Ukrainian institute of scientific and technical expertise and information» in the database «Scientific and technical events of Ukraine» (**Certificate N° 72 dated 5 January 2024**).



*Bibliographic descriptions of the conference proceedings are indexed by Google Scholar, CrossRef, OpenAIRE, OUCI, Scilit, Semantic Scholar, Mendeley, WorldCat and ORCID.*

UDC 082:001

ISBN 978-617-8312-02-2  
ISBN 978-1-8380557-3-8 (PDF)

© Participants of the conference, 2024  
© UKRLOGOS Group LLC, 2024  
© Cambridge Data Science LTD, 2024  
© European Scientific Platform, 2024  
© P.C. Publishing House, 2024

## ABSTRACTS

ANTIHYPERTENSIVE THERAPY FOR COMORBID CONDITIONS IN THE PRACTICE OF A FAMILY DOCTOR <b>Pomazanov D.O., Malyk N.V.</b> .....	490
BRAIN TISSUE AMMONIA IN HUMAN SEPSIS-ASSOCIATED ENCEPHALOPATHY <b>Shuliatnikova T.V., Tumanskyi V.O., Tumanska L.M.</b> .....	493
COMPLEX PSYCHOHYGIENIC ASSESSMENT OF THE DEGREE OF RISK OF ADVERSE CHANGES IN MENTAL HEALTH HIV-INFECTED PERSONS <b>Serheta I.V., Dudarenko O.B.</b> .....	496
PRECANCEROUS DISEASES AND TUMORS OF THE ORAL MUCOSA AND VERMILLION BORDER <b>Semenov K.A., Lieshchova M.O., Semenov D.K.</b> .....	499
RICKETS LINE: THEORY OF AN IDEAL PROFILE <b>Levchenko O.V., Neskromna N.V., Prus R., Chebotarova S.O.</b> .....	502
TEMPOROMANDIBULAR JOINT DISORDERS <b>Semenov K.A.</b> .....	506
VIRAL HEPATITIS IN DENTAL PRACTICE ACTIVITIES <b>Semenov K.A.</b> .....	509
ВПЛИВ ДИСТАНЦІЙНОГО ЖИТТЯ НА ЗІР ЛЮДИНИ <b>Мокрякова М.І., Весніна М.А.</b> .....	512
ГІСТОМЕТРИЧНІ ХАРАКТЕРИСТИКИ СТРУКТУРИ ХОРИАЛЬНИХ ВОРСИНОК ПЛАЦЕНТИ ПРИ ПЕРЕДЧАСНИХ ПОЛОГАХ <b>Токар П.Ю.</b> .....	514
ЗМІНА ПАРАМЕТРІВ ЛОКАЛЬНОЇ ЖОРСТКОСТІ ЗАГАЛЬНИХ СОННИХ АРТЕРІЙ У ПАЦІЄНТІВ ІЗ ГІПЕРТОНІЧНОЮ ХВОРОБОЮ ІІ СТАДІЇ ТА НАЯВНОЮ АТЕРОМОЮ В КАРОТИДНОМУ БАСЕЙНІ В ЗАЛЕЖНОСТІ ВІД СУПУТНЬОГО ЦУКРОВОГО ДІАБЕТУ 2 ТИПУ <b>Богун А.О.</b> .....	517
САМОЛІКУВАННЯ АНТИБІОТИКАМИ СЕРЕД СТУДЕНТІВ МЕДИЧНОГО УНІВЕРСИТЕТУ <b>Михайлович А.Ю., Петріашвілі Т.Д.</b> .....	519
СПРИЙНЯТТЯ СТРЕСУ ХВОРИМИ В ПРОЦЕСІ ЛІКУВАННЯ ІШЕМІЧНОЇ ХВОРОБИ СЕРЦЯ β-АДРЕНОБЛОКАТОРАМИ НА ФОНІ АНКСІОЛІТИЧНОЇ ТЕРАПІЇ <b>Середюк Л.В., Добровольська А.М.</b> .....	521

**DOI 10.36074/logos-29.03.2024.105**

## RICKETS LINE: THEORY OF AN IDEAL PROFILE

**Levchenko Oleksandra V.<sup>1</sup>, Neskromna Nataliia V.<sup>2</sup>, Prus Ruslan<sup>3</sup>,  
Chebotarova Svitlana O.<sup>4</sup>**

---

**1. Student**

*Odessa national medical university, UKRAINE*

**ORCID ID: 0009-0008-1860-655X**

**2. Ass. Professor**

**ORCID ID: 0000-0002-8635-6504**

**3. Ass. Professor**

**ORCID ID: 0000-0002-8548-6892**

**4. Senior Lecturer**

**ORCID ID: 0000-0002-8414-8154**

---

In the global medical context, aesthetic cosmetology has achieved the status of one of the most dynamically developed areas of contemporary global medicine. It successfully incorporates advanced technologies of medical practice, international trends in plastic surgery, scientific advances and so-called “soft” procedures to meet the individual needs of the skin patient ienta.

The use of classic and new methods of anthropometry becomes crucial in the process of preparation before contour correction of the face. Analysis of individual characteristics of soft tissues using additional lateral cephalograms, which includes tracing the facial contour of the profile, is an invisible part of the strategy for successful aesthetic treatments. The use of such a technique is relevant not only in dental practice, but also in further aesthetic cosmetology with the method of eliminating unnecessary changes in the contour of soft tissues in order to improve the patient’s external appearance .

The procedure for correcting the shape of the face profile is aimed at leveling and balancing the contours of the human face in the side projection. This correction may include changes in the shape of the nose, chin, lower jaw, lips, cheekbones and other anatomical formations of the face to achieve an appropriate aesthetic result. The choice of the method of correcting the shape of the profile depends on the justification of the intervention, the individual characteristics of the





## SECTION 30.

### MEDICAL SCIENCES AND PUBLIC HEALTH

patient and the recommendations of a specialist in the field of aesthetic cosmetology or plastic surgery. Before deciding on the procedure, it is always recommended to consult several qualified specialists.

One of the modern methods of anthropometry is cephalometry, which uses special linear and angular parameters to analyse various aspects of the anatomical features of the face and maxillofacial structures. This method is used in the planning of orthodontic interventions, aesthetic correction, as well as for the diagnosis of various anomalies of the dental and jaw system and their subsequent resolution. Analysing a person's profile is an important step before starting various stages of aesthetic procedures or surgical interventions. It helps to understand the individual characteristics of the patient and develop an appropriate plan to achieve the desired aesthetic result.

To assess the anthropometric parameters of the face, the Ricketts line is used, which allows you to determine the vertical relationships between different areas of the face and to assess the aesthetic balance between different anatomical structures of the face.

It is known that the Ricketts line helps medics in cosmetology and dentistry practice to determine the aesthetic correction in the patient's appearance. Above all, special properties and proportions are investigated, and then an aesthetic correction is planned.

The evaluation of harmonic parameters using the Ricketts line is carried out as follows: in the lateral view, the upper lip should be slightly proclined in relation to the lower lip, which should be closer to the Ricketts line. If the bite is correct, the upper lip is located 2-3 mm from the Ricketts line, the lower lip - 1-2 mm. Based on the Ricketts line, the doctor determines the ratio of the tip of the nose and the most protruding parts of the chin. The evaluation of this criteria allows to offer the patient one or another method of restoring the aesthetic harmony of different areas of the profile according to the above-mentioned Ricketts line.

Because of this, we examined 11 patients aged from 30 to 54 years old in a private dental clinic in Odesa (Ukraine) from January to March 2024, who underwent cephalometric images in the lateral projection (TRG). Subsequently, the dimensions of Ricketts' line were measured with the help of a ruler and compared with standard indicators.

(Fig. 1) shows patient M., 39 years old. The patient has secondary adentia (partial absence of teeth); tooth extraction took place a long time ago, which led to a decrease in the height of the bite, a change in the inclination of the upper incisors. As a result, a flattened face profile was formed, as well as smoothing of the outer edges of the upper and lower lips, which indicates that the profile does not match the parameters of the Ricketts line.



Fig. 1. Apparatus Digital cephalostat with a fixed sensor - Planmeca OY (Finland) Cephalometric imaging using Planmeca 3D x-ray devices (2020)

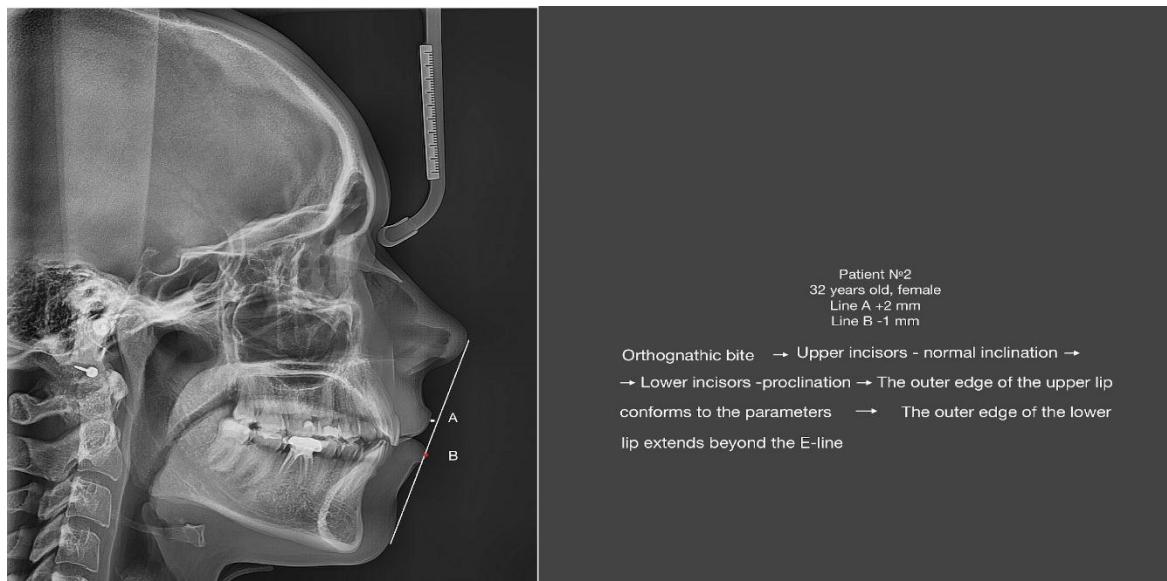


Fig. 2. Apparatus Digital cephalostat with a fixed sensor - Planmeca OY (Finland) Cephalometric imaging using Planmeca 3D x-ray devices (2020)

(Fig. 2) shows patient Zh., 32 years old. The patient has a normal bite (Orthognathic bite), when the upper teeth overlap the lower ones by about 1/3 of the height of their crowns. The inclination of the upper incisors is normal, the inclination of the lower incisors is proclination that is the inclination of the teeth to the vestibular side. Since the patient's lower lip is small and there is not enough



**SECTION 30.**

MEDICAL SCIENCES AND PUBLIC HEALTH

space due to delicate lips, the lip slightly protrudes forward and the outer edge goes beyond the E-line, which indicates that the profile does not match the parameters of the Ricketts line.

Overall, after conducting cephalometric images in the lateral projection among 11 patients aged from 30 to 54 years, we found that the concept of the "ideal" face is relative and may differ depending on cultural, individual and ethnic factors. Beauty can manifest itself in different forms and facial features, so you need to approach the assessment of beauty individually and taking into account issues of ethics and deontology.

**REFERENCES:**

- [1] 1.Frank Netzel, Christian Schultz "Practical guide to orthodontic diagnostics." p. 67
- [2] 2.Dental Articles by Dr.Frank Spear on March 9, 2017
- [3] Patil HD, Nehete AB, Gulve ND, Shah KR, Aher SR 23 Evaluation of upper incisor position and its comparison with lip posture in orthodontically treated patients. IOSR J Dent Med Sci. 2018;17(4):53-60.